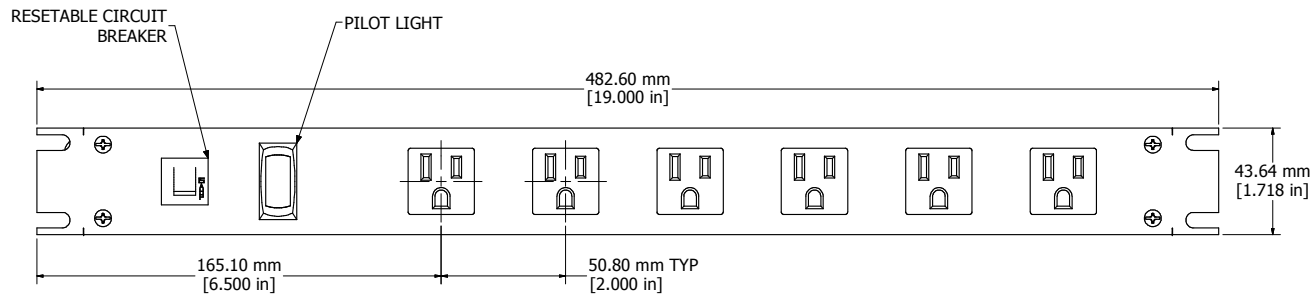
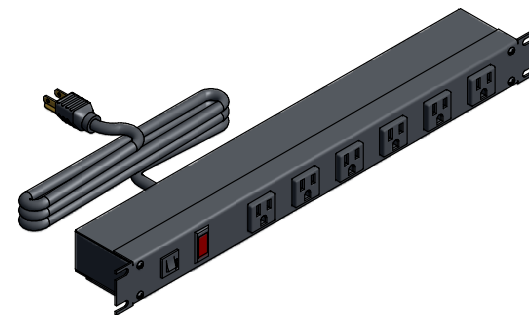


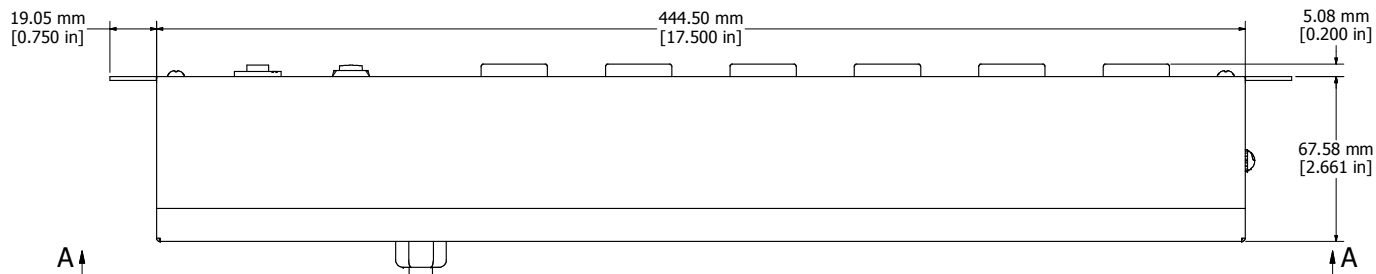
8 | 7 | 6 | 5 | 4 | 3 | 2 | 1



ASSEMBLY - VIEW FROM FRONT

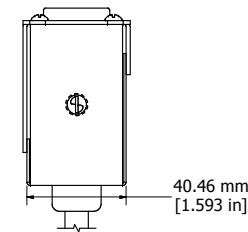


ISOMETRIC VIEW

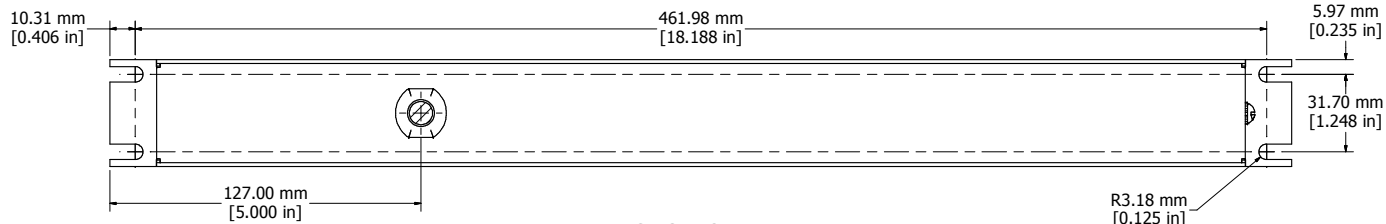


ASSEMBLY - VIEW FROM BOTTOM

15' FOOT
POWER CORD
(NEMA 5-15P)



ASSEMBLY - VIEW FROM SIDE



SECTION A-A

8 | 7 | 6 | 5 | 4 | 3 | 2 | 1

1582T6B1BKRA
Finish - Front - Black Painted Steel
Back - Black Painted Steel
Rated - 125 VAC, 60 Hz, 15 Amps
Approvals - CSA Certified Standards C22.2 (No. 21-95, 42-99)
- UL Recognized Standard UL 1363

**HAMMOND
MANUFACTURING™**

1582T6B1BKRA

www.hammondmfg.com